

Cadella Park

A Little of the History

The Macedon Ranges area possesses one of Australia's best collections and concentrations of cultural heritage; in particular, the Shires of Gisborne, Newham & Woodend and Romsey, which represent early settlement through to twentieth century development. The heritage elements collectively in their style, function and historical development clearly distinguish the Macedon Ranges as a particular form of cultural heritage not seen elsewhere in Australia.

Situated in one of the oldest settled areas in the Macedon Ranges, Cadella Park is a working farm with a rich pioneering past. It provides a significant contribution to those early and later years, with a backdrop of original buildings and a landscape where agricultural and pastoral activities have flourished since the late 1830s.

Until its renaming in the 1950s, Cadella Park, was called 'Oatlands' – a 650-acre property originally known for its oat crops. The *Woodend Star* of 20 May 1911, and still published today, reported that Oatlands was the scene of a damaging fire "when some 50 tons of oat and wheat straw were destroyed, the quick actions of the neighbours helping to prevent the destruction of a further 600 bags of grain and a 100 tons of hay".

In other phases of its history, Cadella Park has been noted for its prestigious horse racing stables – credited with housing the 1933 Melbourne Cup winner (Hall Mark) – and the establishment in 1963 of an internationally known Murray Grey stud which pioneered the breeding and export of these cattle to America winning many local awards.

Cadella Park Today – the Garden

Cadella Park is a family home, a working farm and a venue for hosting private events. It covers an area of 120 acres with the garden and buildings occupying eight. It has not previously been open to the public.

The farm complex is located at the end of a long gravelled driveway which has magnificent towering elms of some 180 years old, flanked by clipped tapestry hedging – largely comprised of hawthorns. Cool and shady in the summer and glowing with colour in autumn.

Well maintained mature evergreen and deciduous trees are a predominant feature of the garden area providing year round interest. They include poplars, cedar species – including a number of Himalayan cedar (*Cedrus deodara*) – a huge Monterey pine, maples and willows to mention a few. There are also mature cypress hedges, many clipped and variegated shrubs and other plantings of various periods with more recent additions designed by Simon Rickard.

Currently the plan with the garden is to make it manageable and more contemporary with fewer garden beds. Several beds, which had a collection of plants of no colour theme or shape, have been removed from around the main house.

GARDEN NOTES

Simon Rickard has assisted by designing a new bed by the pool, a design for the front of the house and around the original cottage. The brief to him was low maintenance and low water requirements. We have moved a small orchard closer to the vegetable garden where we grow a small amount of vegetables as well as plants and seedlings in the green house. The kitchen herb garden is always flourishing with a variety of herbs nestled under a lovely bay tree.

The back of the house will be the next project along the waterway as well as some extensive tree works, clearing the shrub area and removing two old poplars which continue to drop huge limbs.

The garden around the cottage has a real cottage feel with a variety of seasonal flowering plants and native grasses.

Cadella Park Today – the Buildings

The main house consists of a hipped roof 1870s timber section which has been surrounded by extensive additions in the 1920s and 1930s. The interior still features distinctive timber lined interiors thought to have been added in the late 1920s. Perhaps the most notable building on the property is the early homestead built circa 1845. It is constructed from stone, with verandas all round and a shingled roof under corrugated iron. By the 1870s it was reputedly operating as a cheese making house.

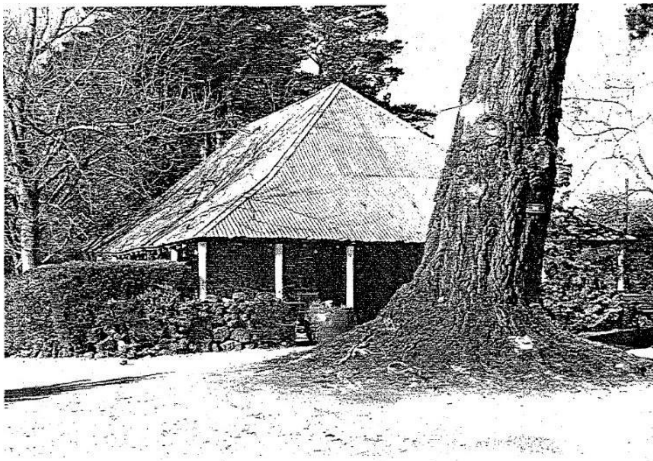


Image: The Homestead

The outbuildings – which we will be using extensively for our opening – include a restored and re-purposed barn, a large hayshed and the homestead.

We warmly welcome you to Cadella Park – enjoy our range of plant stalls, local produce, art and craft, music, garden tours, a pop-up café and more. **Jo-Ann Beck**

Cardella Park is located on the lands of the Taungurung People. Open Gardens Victoria wishes to acknowledge the Traditional custodians of this land and we pay respect to their Elders, past, present and emerging.

These notes can be downloaded from the Open Gardens Victoria website:

www.opengardensvictoria.org.au

